

ActiveLED® Pachanga Moldcast Faceplate MDL

RETROFIT SERIES



PROJECT INFORMATION

Project Name _____

Catalog No. _____

Date _____

DESCRIPTION

The U.S.-manufactured ActiveLED® Pachanga Retrofit Faceplate is an innovative, modern and durable design for use in conjunction with the ActiveLED self-contained LED light engine designed to easily replace the inefficient, high-wattage lamp assembly in most existing Moldcast MDL wall or ceiling-mount fixtures, providing energy savings of 50-80 percent.

Applications include: Outdoor Walkways, Parking Structures, Parking Lots, Pedestrian Areas, Stairwells, and Other Public Spaces.

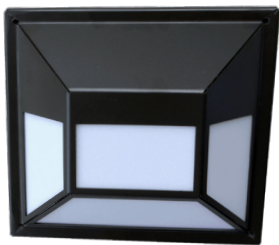


Retrofit for Pachanga Moldcast

FACEPLATE



FIWTA-BK Shown



B3WTA-BK Shown

LIGHT DISTRIBUTION PATTERNS

- MDL - R1 Short forward
- MDL - R2 Medium Forward
- MDL - R3 Omni Directional
- MDL - R4 Stairwell
- MDL - R5 360° Ceiling Symmetrical
- MDL - R7 Ceiling Asymmetrical

The faceplate can be ordered in various colors as well as custom color schemes.

A variety of diffuser options includes a Vandal Resistant option that has extra strong diffuser and diffuser retainers.

A Super Vandal Resistant option uses Stainless instead of Aluminum for the frame material which can be unpainted, clear powder coated or coated with a color of your choice.

The LED Light Engine is not included and has to be ordered separately. The Faceplate is only suitable to be used with an LED Light Engine in the fixture.



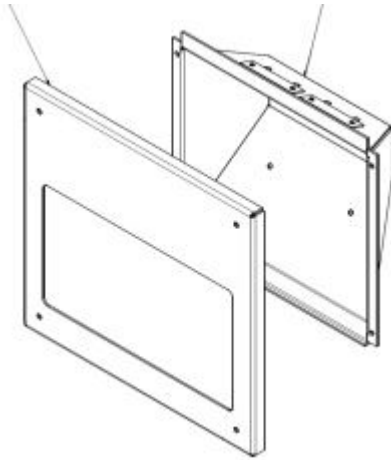
ActiveLED®
Energy Efficient Lighting and Controls

Warranty includes workmanship, dimensions within its tolerances and diffuser material's UV resistance.
Warranty does not cover physical destruction.



ActiveLED® Pachanga Moldcast Faceplate MDL

RETROFIT SERIES



GENERAL SPECIFICATIONS

Frame Material	Formed Aluminum 3003 (standard) Stainless (Super Vandal Resistant)	Finish	Powder coated after fabrication: The finish shall meet the AAMA 605.2 performance specification which includes passing a 3000 hour salt spray test for corrosion resistance.
Lens / Diffuser	Acrylic min 2mm thick, UV resistant TiO diffuser: The diffuser shall not yellow over the duration of 10 years with direct sun exposure of maximum 320 days per year.	Dimensions	Faceplate: 11.13" Height, 12.13" Wide, Distance of mounting screws: 9.375" Vertical, 10.375" Horizontal
Vandal Resistant	When Vandal Resistant Option is specified, each diffuser element (if more than one) is retained by a minimum of 6 integrated studs and the diffuser is constructed of minimum 2 layers of diffuser material one diffuse one clear. The clear material is made of Macrolon® on the outside of the diffuser as it is fire retardent.	Weight	1.1 pounds (0.6 kg)

WARRANTY

Ten (10) Year Warranty - Faceplate shall conform to its published specifications under normal usage and operating conditions including "no light loss" of more than 10% at the end of the period. This assumes perfectly sealed application of the faceplate and MDL Box as well as regular cleaning.

LISTINGS AND TESTS

Suitable for damp locations. RoHS compliant.

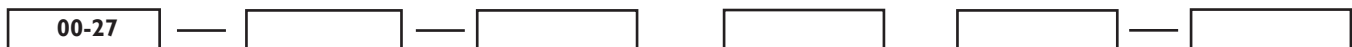
WEEE AND RECYCLING

ActiveLED will accept the Faceplate back for safe recycling, at its WEEE locations, shipping cost to be covered by customer.

For high volumes and weight of materials to be recycled, inside USA, UK or Europe, call us to find out if pickup is available.

ORDERING INFORMATION

Example: 00-27-2711-BI-CFP-BZ



Style	Model	Type	Pattern	Diffuser	Color
Pachanga	2711 Faceplate Aluminum 2711-S Faceplate Stainless	F Non-Pertruding B Beveled	1 Wall Forward Pattern 2 Wide Short 3 Wall Omni-Directional 4 Stairwell 5 Ceiling Symmetrical 7 Ceiling Asymmetrical	CFP Clear Frosted Polycarbonate WTA TiO White Translucent Acrylic VR Vandal Resistant TiO White Translucent Acrylic Macrolon® C Clear Macrolon® for Short Forward	BK Black WT White BZ Bronze CV Copper Vein CC custom colors on request